

SIL IPA Unicode 1.0.5 Keyman Keyboard

*Martin Hosken,
SIL Non-Roman Script Initiative (NRSI)*

Introduction

With the advent of Unicode, the opportunities for those using the IPA are immense. Many of the previous technological difficulties of being limited to 8-bit data seem to have a solution in Unicode. Now we can have one font containing all of IPA, standard ASCII and perhaps anything else we want.

Keyman¹ is a software utility that allows one to define what characters will appear when typing. It does this by means of simple or complex keyboard definitions. One keyboard definition is included with this font package.

IPAUni10.kmx is a mnemonic keyboard definition which enters Unicode values for IPA. This newest version of the keyboard supports a mnemonic layout. This allows a user to type with any kind of keyboard, rather than just a US keyboard. Details of the keyboard layout may be found in the section on Keyboard Layout.

Keyboard Installation

Keyman 6 or later is needed for using the keyboard. Keyman's latest version is available from <http://www.tavultesoft.com>. If you will be writing or modifying keyboards, you will need the Developer version. Otherwise, get the regular version.

Keyman Install

1. Uninstall any previous versions of Keyman
2. Install Keyman, following the installation instructions provided with Keyman.
3. If you haven't run Keyman for the first time yet, go to **Start / Programs / Tavultesoft Keyman** (or whatever location you chose during install.)
4. This will briefly show an 'About' screen and place the Keyman icon in your system tray (bottom left of screen).
5. Register your copy by right-clicking this icon, then click **About / Register**.
6. Right click the Keyman icon, and click 'Start with Windows' if you want Keyman to be available each time you start-up.

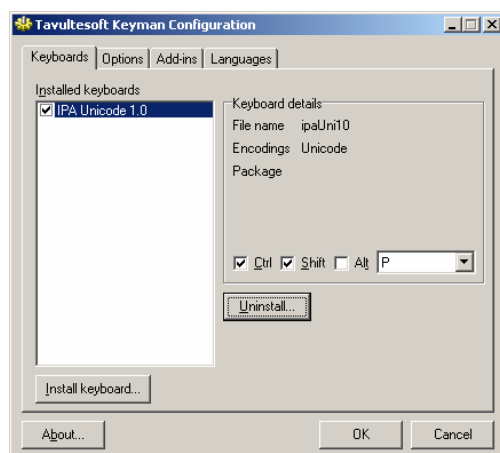
Keyboard Install

The new Unicode keyboard is *IPAUni10.kmx*.

1. Install this keyboard by right-clicking the Keyman icon on your system tray.
2. Click **Keyman Configuration...**
3. Click the **Install Keyboard** button.

¹ See <http://www.tavultesoft.com> for more details of this product.

4. Browse to the location of the file *IPAUni10.kmx*. It is in the Keyboards folder.
5. Click *IPAUni10.kmx* to select it. Then click **Open**, choose a hotkey (one is already selected for you but you may choose another one or choose none), then **Install**. You should get a message saying the keyboard was installed successfully.
6. Click **OK** and **OK**.



Office 2000 Language Settings

To work with a keyboard in Windows, you should associate it with a language in **Start / Programs / Microsoft Office Tools / Microsoft Office Language Settings**. Since IPA is not on the list, choose a language which you won't be working in normally, preferably one using a Roman script such as Icelandic or Afrikaans. An additional tip is that you should choose a language for which the Proofing Tools are not installed. When you switch languages in an Office program, it looks to see if it has proofing tools for that language. If there aren't any, Office turns off proofing for all text in that language. Otherwise, you may have red and green squiggly lines under your IPA data. In the example below, we are using Icelandic.



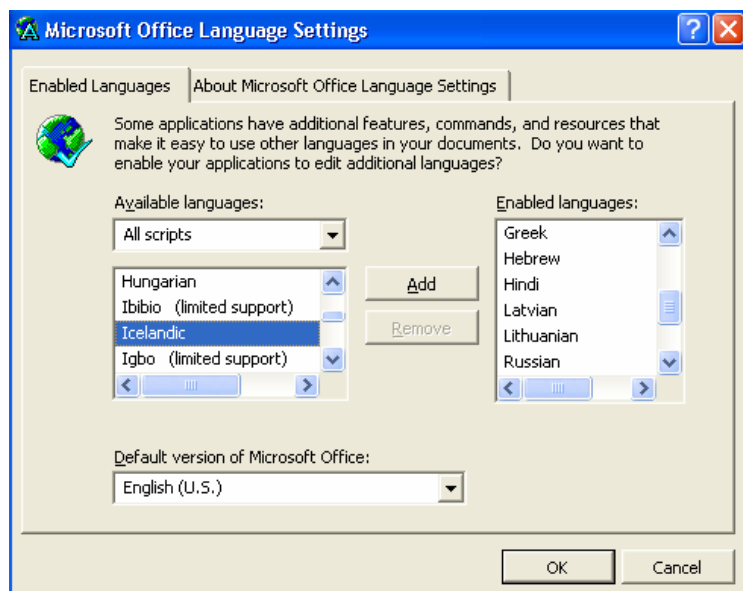
When you click **Apply**, you may then be asked the following:



Follow the directions on the screen. You can delay restarting until finishing these installation instructions.

Office XP Language Settings

To work with a keyboard in Windows, you should associate it with a language in **Start / Programs / Microsoft Office Tools / Microsoft Office XP Language Settings**. Since IPA is not on the list, choose a language which you won't be working in normally, preferably one using a Roman script such as Icelandic or Afrikaans. An additional tip is that you should choose a language for which the Proofing Tools are not installed. When you switch languages in an Office program, it looks to see if it has proofing tools for that language. If there aren't any, Office turns off proofing for all text in that language. Otherwise, you may have red and green squiggly lines under your IPA data. In the example below, we are using Icelandic.

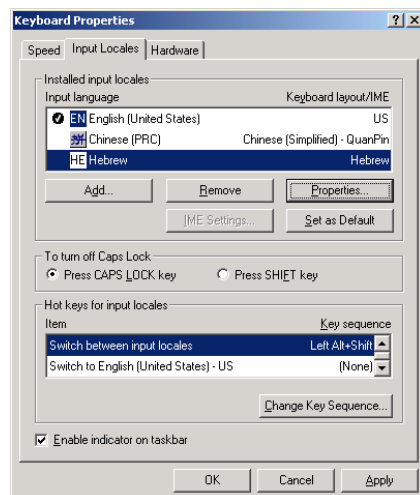


Click on **Add** and then **OK**. Follow the directions on the screen. You can delay restarting until finishing these installation instructions.

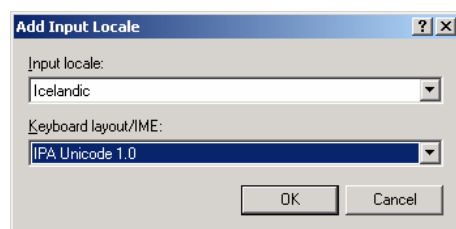
Input Locales (for Windows 2000)

1. Go to **Start / Settings / Control Panel / Regional Options**.

2. Select the **Input Locales** tab. You will need to add Icelandic. Click **Add**.



3. Set the Input Locale to Icelandic and the keyboard to **IPA Unicode 1.0.5**. Remember, you are substituting the *IPA* keyboard for Icelandic (or whatever other language you chose).



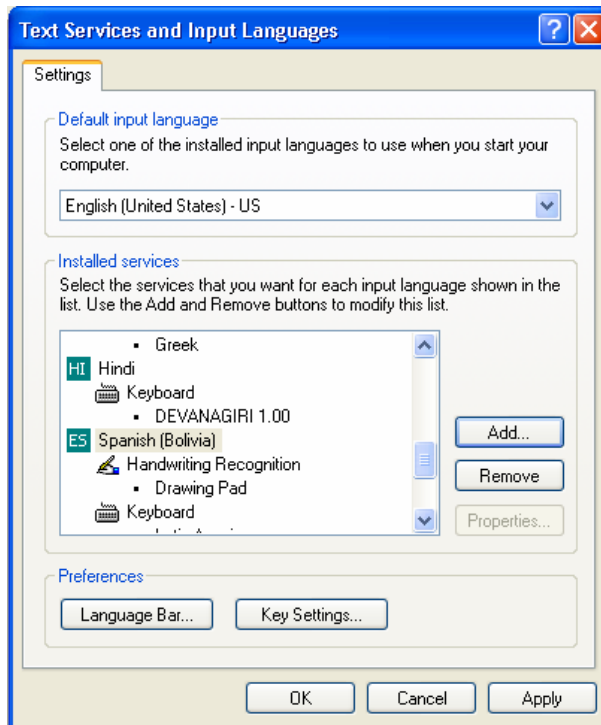
4. Click **OK**, **Apply**, **OK**. Once you have the Keyman keyboard associated with Icelandic, you should switch it on and off *only* using the input locale icon. You shouldn't use the Keyman icon. Close the Control Panel window.
5. Restart.

Using the Keyboard in Windows 2000

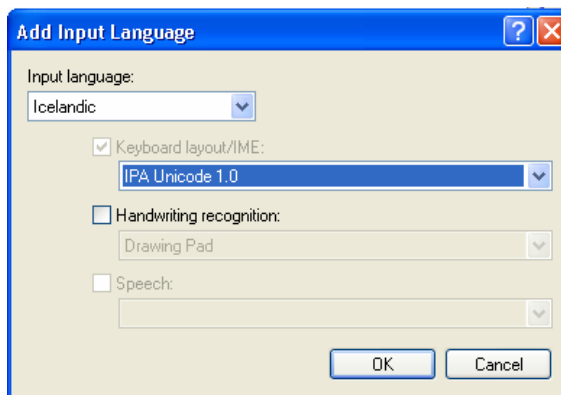
To use the keyboard, go to your application and set the font to **Doulos SIL**. Click the language icon on your system tray ('EN' for English) and select **IS Icelandic - IPA Unicode 1.0.5** as the language and keyboard. Begin typing. The keyboard layout is described in the section on Keyboard Layout.

Input Locales (for Windows XP)

6. Go to **Start / Settings / Control Panel / Regional and Language Options**.
7. Select the **Languages** tab, then the **Details...** button. You will need to add Icelandic. Click **Add**.



8. Set the Input Language to Icelandic and the keyboard to **IPA Unicode 1.0.5**. Remember, you are substituting the *IPA* keyboard for Icelandic (or whatever other language you chose).



9. Click **OK, OK**. Once you have the Keyman keyboard associated with Icelandic, you should switch it on and off *only* using the Language Bar icon. You shouldn't use the Keyman icon. Close the Control Panel window.
10. Restart.

Note: You may install more than one keyboard for a given language. For instance, you can assign more than one IPA keyboard to Icelandic, or add IPA to a language which also has a system keyboard. If a language has multiple keyboards assigned, you will see a small 'keyboard' icon appear in the system tray when you select that language. Click it and select the keyboard you wish to use.

Using the Keyboard in Windows XP

To use the keyboard, go to your application and set the font to **Doulos SIL**. Click the language icon on your system tray ('EN' for English) and select **IS Icelandic** as the language. If you have more than one keyboard assigned to Icelandic, then click the small 'keyboard' icon and select the keyboard **IPA Unicode 1.0.5**. Begin typing. The keyboard layout is described in the Keyboard Layout Document.