

View of Reviews  
or  
Scenes as Seen  
By

Engineers  
Tropical Tourists  
Globe Trotters

---

---

Knights of Fortune  
Cross Section Book  
and  
Tramps

376

Madaira - Mamoré R.

---

---

Brazil South America



596.245 d



LIT. 15M. 7

35  
36

Calculated by

No. 251

# KEUFFEL & ESSER CO.

## DRAWING MATERIALS AND SURVEYING INSTRUMENTS. NEW YORK.

CHICAGO.

SAN FRANCISCO.

ST. LOUIS.

### TABLES FOR EXCAVATIONS AND EMBANKMENTS.

DISTANCES FROM CENTER OF ROADWAY FOR CROSS-SECTIONING.

ROADWAY 18 FEET WIDE. SIDE SLOPES 1 TO 1.  
FOR SINGLE TRACK EXCAVATION.

*"Copyright, 1895, by Keuffel & Esser Co."*

L.T. McCann, Transitman, Madeira ~ Mamore R.L., June 5, 1909.

	0	.1	.2	.3	.4	.5	.6	.7	.8	.9	
0	9.0	9.1	9.2	9.3	9.4	9.5	9.6	9.7	9.8	9.9	0
1	10.0	10.1	10.2	10.3	10.4	10.5	10.6	10.7	10.8	10.9	1
2	11.0	11.1	11.2	11.3	11.4	11.5	11.6	11.7	11.8	11.9	2
3	12.0	12.1	12.2	12.3	12.4	12.5	12.6	12.7	12.8	12.9	3
4	13.0	13.1	13.2	13.3	13.4	13.5	13.6	13.7	13.8	13.9	4
5	14.0	14.1	14.2	14.3	14.4	14.5	14.6	14.7	14.8	14.9	5
6	15.0	15.1	15.2	15.3	15.4	15.5	15.6	15.7	15.8	15.9	6
7	16.0	16.1	16.2	16.3	16.4	16.5	16.6	16.7	16.8	16.9	7
8	17.0	17.1	17.2	17.3	17.4	17.5	17.6	17.7	17.8	17.9	8
9	18.0	18.1	18.2	18.3	18.4	18.5	18.6	18.7	18.8	18.9	9
10	19.0	19.1	19.2	19.3	19.4	19.5	19.6	19.7	19.8	19.9	10
11	20.0	20.1	20.2	20.3	20.4	20.5	20.6	20.7	20.8	20.9	11
12	21.0	21.1	21.2	21.3	21.4	21.5	21.6	21.7	21.8	21.9	12
13	22.0	22.1	22.2	22.3	22.4	22.5	22.6	22.7	22.8	22.9	13
14	23.0	23.1	23.2	23.3	23.4	23.5	23.6	23.7	23.8	23.9	14
15	24.0	24.1	24.2	24.3	24.4	24.5	24.6	24.7	24.8	24.9	15
16	25.0	25.1	25.2	25.3	25.4	25.5	25.6	25.7	25.8	25.9	16
17	26.0	26.1	26.2	26.3	26.4	26.5	26.6	26.7	26.8	26.9	17
18	27.0	27.1	27.2	27.3	27.4	27.5	27.6	27.7	27.8	27.9	18
19	28.0	28.1	28.2	28.3	28.4	28.5	28.6	28.7	28.8	28.9	19
20	29.0	29.1	29.2	29.3	29.4	29.5	29.6	29.7	29.8	29.9	20
21	30.0	30.1	30.2	30.3	30.4	30.5	30.6	30.7	30.8	30.9	21
22	31.0	31.1	31.2	31.3	31.4	31.5	31.6	31.7	31.8	31.9	22
23	32.0	32.1	32.2	32.3	32.4	32.5	32.6	32.7	32.8	32.9	23
24	33.0	33.1	33.2	33.3	33.4	33.5	33.6	33.7	33.8	33.9	24
25	34.0	34.1	34.2	34.3	34.4	34.5	34.6	34.7	34.8	34.9	25
26	35.0	35.1	35.2	35.3	35.4	35.5	35.6	35.7	35.8	35.9	26
27	36.0	36.1	36.2	36.3	36.4	36.5	36.6	36.7	36.8	36.9	27
28	37.0	37.1	37.2	37.3	37.4	37.5	37.6	37.7	37.8	37.9	28
29	38.0	38.1	38.2	38.3	38.4	38.5	38.6	38.7	38.8	38.9	29
30	39.0	39.1	39.2	39.3	39.4	39.5	39.6	39.7	39.8	39.9	30
31	40.0	40.1	40.2	40.3	40.4	40.5	40.6	40.7	40.8	40.9	31
32	41.0	41.1	41.2	41.3	41.4	41.5	41.6	41.7	41.8	41.9	32
33	42.0	42.1	42.2	42.3	42.4	42.5	42.6	42.7	42.8	42.9	33
34	43.0	43.1	43.2	43.3	43.4	43.5	43.6	43.7	43.8	43.9	34
35	44.0	44.1	44.2	44.3	44.4	44.5	44.6	44.7	44.8	44.9	35
36	45.0	45.1	45.2	45.3	45.4	45.5	45.6	45.7	45.8	45.9	36

Calculated by Julien A. Hall, M. Am. Soc. C. E.

July 20096

DISTANCES FROM CENTER OF ROADWAY FOR CROSS-SECTIONING.

ROADWAY 14 FEET WIDE. SIDE SLOPES  $1\frac{1}{2}$  TO 1.

FOR SINGLE TRACK EMBANKMENT.

	0	.1	.2	.3	.4	.5	.6	.7	.8	.9	
0	7.0	7.2	7.3	7.5	7.6	7.8	7.9	8.1	8.2	8.4	0
1	8.5	8.7	8.8	9.0	9.1	9.3	9.4	9.6	9.7	9.9	1
2	10.0	10.2	10.3	10.5	10.6	10.8	10.9	11.1	11.2	11.4	2
3	11.5	11.7	11.8	12.0	12.1	12.3	12.4	12.6	12.7	12.9	3
4	13.0	13.2	13.3	13.5	13.6	13.8	13.9	14.1	14.2	14.4	4
5	14.5	14.7	14.8	15.0	15.1	15.3	15.4	15.6	15.7	15.9	5
6	16.0	16.2	16.3	16.5	16.6	16.8	16.9	17.1	17.2	17.4	6
7	17.5	17.7	17.8	18.0	18.1	18.3	18.4	18.6	18.7	18.9	7
8	19.0	19.2	19.3	19.5	19.6	19.8	19.9	20.1	20.2	20.4	8
9	20.5	20.7	20.8	21.0	21.1	21.3	21.4	21.6	21.7	21.9	9
10	22.0	22.2	22.3	22.5	22.6	22.8	22.9	23.1	23.2	23.4	10
11	23.5	23.7	23.8	24.0	24.1	24.3	24.4	24.6	24.7	24.9	11
12	25.0	25.2	25.3	25.5	25.6	25.8	25.9	26.1	26.2	26.4	12
13	26.5	26.7	26.8	27.0	27.1	27.3	27.4	27.6	27.7	27.9	13
14	28.0	28.2	28.3	28.5	28.6	28.8	28.9	29.1	29.2	29.4	14
15	29.5	29.7	29.8	30.0	30.1	30.3	30.4	30.6	30.7	30.9	15
16	31.0	31.2	31.3	31.5	31.6	31.8	31.9	32.1	32.2	32.4	16
17	32.5	32.7	32.8	33.0	33.1	33.3	33.4	33.6	33.7	33.9	17
18	34.0	34.2	34.3	34.5	34.6	34.8	34.9	35.1	35.2	35.4	18
19	35.5	35.7	35.8	36.0	36.1	36.3	36.4	36.6	36.7	36.9	19
20	37.0	37.2	37.3	37.5	37.6	37.8	37.9	38.1	38.2	38.4	20
21	38.5	38.7	38.8	39.0	39.1	39.3	39.4	39.6	39.7	39.9	21
22	40.0	40.2	40.3	40.5	40.6	40.8	40.9	41.1	41.2	41.4	22
23	41.5	41.7	41.8	42.0	42.1	42.3	42.4	42.6	42.7	42.9	23
24	43.0	43.2	43.3	43.5	43.6	43.8	43.9	44.1	44.2	44.4	24
25	44.5	44.7	44.8	45.0	45.1	45.3	45.4	45.6	45.7	45.9	25
26	46.0	46.2	46.3	46.5	46.6	46.8	46.9	47.1	47.2	47.4	26
27	47.5	47.7	47.8	48.0	48.1	48.3	48.4	48.6	48.7	48.9	27
28	49.0	49.2	49.3	49.5	49.6	49.8	49.9	50.1	50.2	50.4	28
29	50.5	50.7	50.8	51.0	51.1	51.3	51.4	51.6	51.7	51.9	29
30	52.0	52.2	52.3	52.5	52.6	52.8	52.9	53.1	53.2	53.4	30
31	53.5	53.7	53.8	54.0	54.1	54.3	54.4	54.6	54.7	54.9	31
32	55.0	55.2	55.3	55.5	55.6	55.8	55.9	56.1	56.2	56.4	32
33	56.5	56.7	56.8	57.0	57.1	57.3	57.4	57.6	57.7	57.9	33
34	58.0	58.2	58.3	58.5	58.6	58.8	58.9	59.1	59.2	59.4	34
35	59.5	59.7	59.8	60.0	60.1	60.3	60.4	60.6	60.7	60.9	35
36	61.0	61.2	61.3	61.5	61.6	61.8	61.9	62.1	62.2	62.4	36

Calculated by Julien A. Hall, M. Am. Soc. C. E.

NY 10054

14

1

Photo 1

P. 1

From collection of  
P C Mc Michen  
Box 414862  
Miami Beach, Fla. 33141  
Jan 1982

BIBLIOTECA (A)  
BRASIL  
NACIONAL

1435.987  
03102/15 AA

May  
10048



261

Pay day in Porto Velho

Photo 1

p. 1

p. 2



Foundation for Engineer's quarters

BIBLIOTECA  
 NACIONAL

(2) 1.435.904 <sup>2</sup>  
 AA  
 03102195

NUM 10058

May 1909

BIBLIOTECA  
BRASIL  
NACIONAL

(3) 1.435.902 AA  
03/02/15



3  
P. 3

Porto Velho May 1909.



P. 6



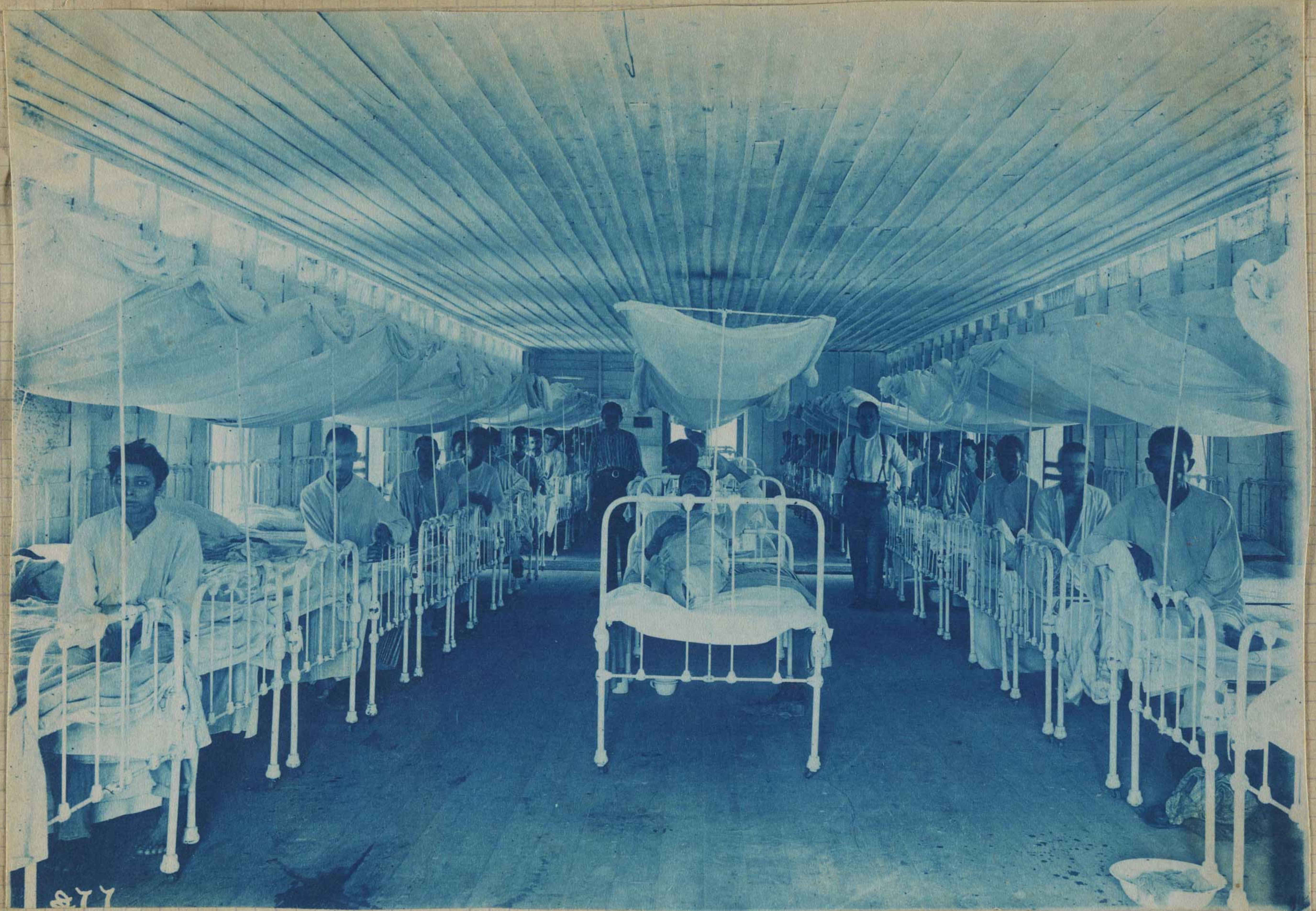
Unfinished Wharf, and "Steam Ship Falk"

Mag 20551

BIBLIOTECA (4) 1.435.903 AA  
 BRASIL  
 NACIONAL 03/02/15

P.V. Ma  
April 1909.

7



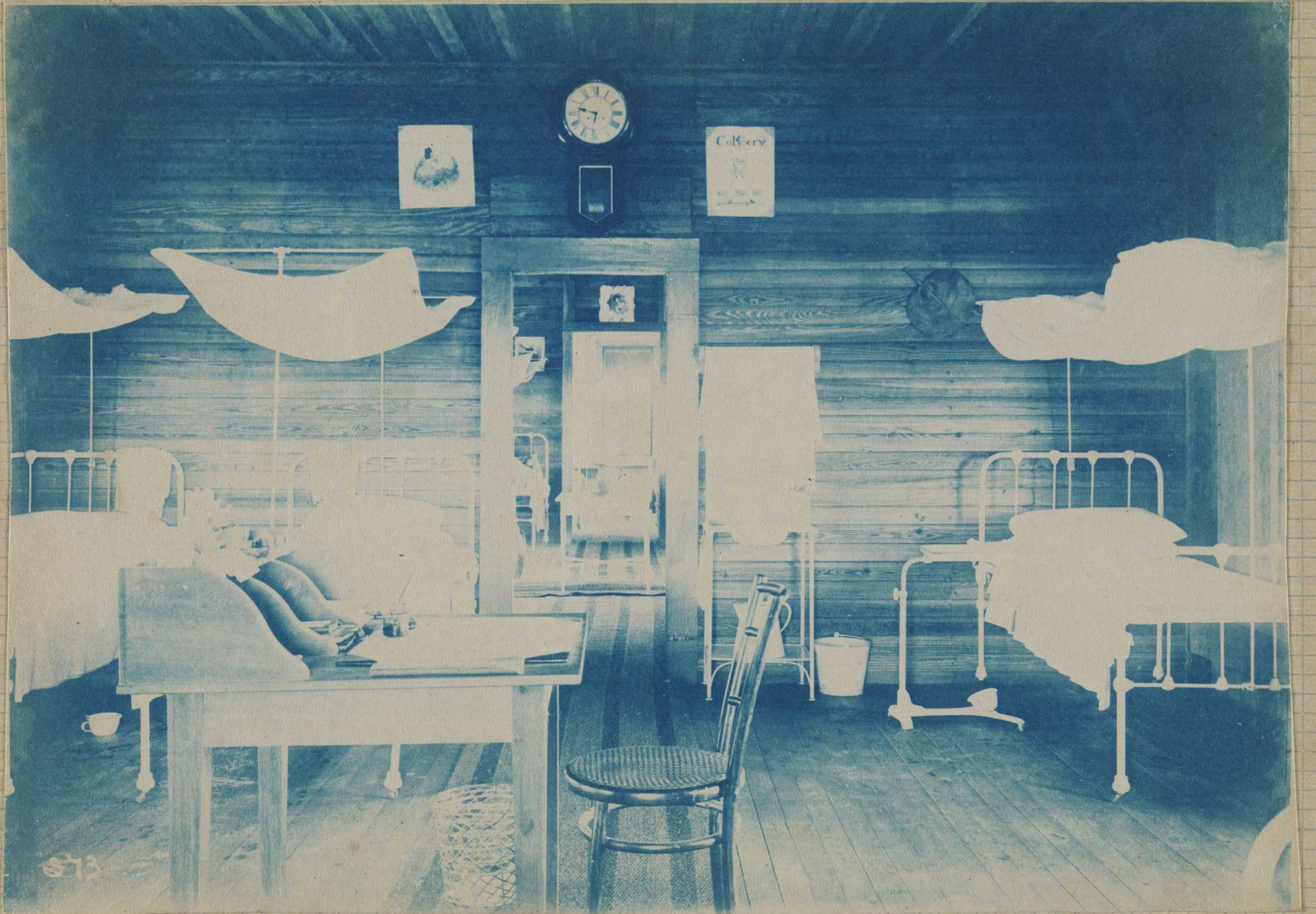
*Interior of Native Ward, Candelaria Hospital*

Jeg 20048

(5)  $\frac{1,435.904}{03/02/15}$  AA

57

(6) 1.435.905 AA  
03102195



*Interior of American Ward Candelaria Hospital*

Aug 10049

P. 9  
6

P. 12



271

*Candelaria Hospital*

(7) 1.435.906 AA  
 03/02/45

Nig 10070

✓



284

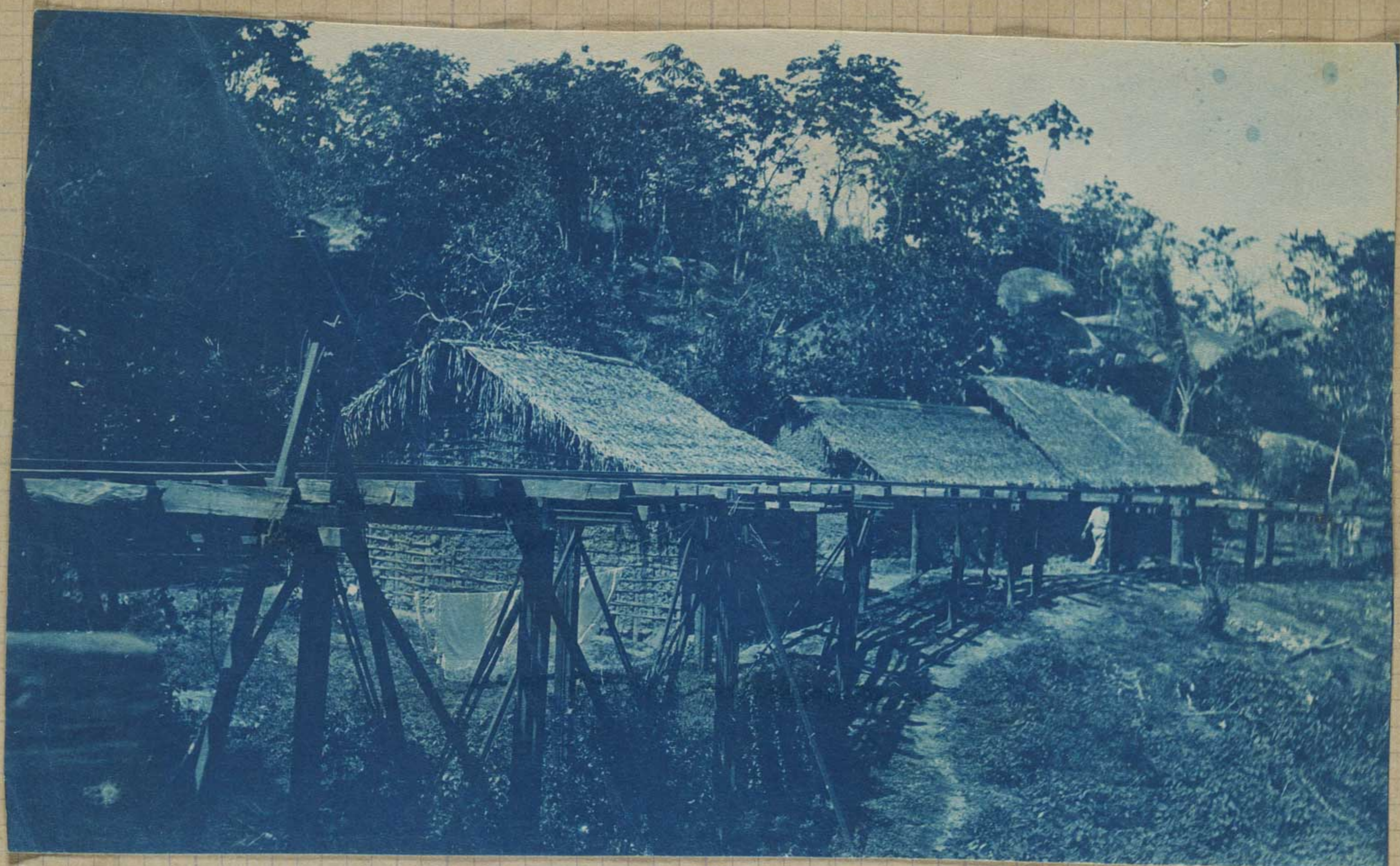
Grave Yard. Candalaria

(8)  $\frac{1.435.907}{03/02/15}$  AA

P. 13

8

Nov 19050



(9) 1.435.908 AA  
 03/02/15

Neg 10068

Rail Bridge at Santo Antonio



BIBLIOTECA  
 ASIL  
 MUSEUM

(10) 1.435.909 AA  
 03/02/15

Neg 10068

Headquarter of Collins Expedition  
 Now used as a Jail

Santo Antonio  
 Brazil 1909.

p. 18



995

AA

Along the Line of the Madeira-Mamoré Ry. Brazil.

neg 10069

BIBLIOTECA  
BRASIL  
NACIONAL

(11) 1.435.910 AA  
03/02/15

11

BIBLIOTECA NACIONAL BRASIL



May 10045

Camp of Party #3 at Mutum Parana

May 10063

(12) 1.435.911 AA  
03/02/75

P. 19  
12

(12) 1.435.916 AA  
03/02/75





*Santo Antonio Falls at low water*

Neg 50073

BIBLIOTECA  
BRASIL  
NACIONAL

(13) 1.435.912 PA

03/02/15

14

P. 21



BIBLIOTECA  
BRASIL  
NACIONAL

*A Boa Constrictor 25' long*

(41) 1.435.913 AA  
03102115

Neq 10065



22

BIBLIOTECA  
BRASIL  
NACIONAL

(15) 1.435.994  
03/02/15

*Carapuna Indians at Tres Irmaões*

10066

BIBLIOTECA (16) 1.435.915 AA  
BRASIL  
03/02/15  
NACIONAL



neg 10074 J.C. Bolton Ch. of Party #3 M.M.Ry. Brazil.



Camp of Party #3 at Mutum Parana

(17) 1.435.916 AA  
03/02/15

neg 10075

P. 24



Coral at Camp #9. M.M.Ry.

BIBLIOTECA  
BRASIL  
NACIONAL

(18) 1435.917  
03102115

AA 1/2

neg 10051

BIBLIOTECA (19) 1435.918 AA  
BRASIL  
NACIONAL  
03/02/15

p. 27



330

19

Santo Antonio Brazil, June 1909.  
Sidewalk made of rails left by the Collins Expedition in 1878

neg 10085

P. 226

20



Neg 10086

R.H. Kelly and M.M. Buster

BIBLIOTECA  
BRASIL  
NACIONAL

(20) 1,435.919  
03102195  
a1



Neg 10087

Igarapé behind Engrs. quarters at P.V. in time of High Water (21)

BIBLIOTECA  
BRASIL  
NACIONAL

1,435.920  
03102195

22

P. 31



BIBLIOTECA  
BRASIL  
NACIONAL

One of the remains of the Ill Fated Expedition of 1878  
 (22) 1.435.927 AA  
 03102115

July 20 1915

23



BIBLIOTECA  
BRASIL  
NACIONAL

R. Suarez and Co. at Santo Antonio, Rio Madeira, Brazil  
 The largest Rubber Company in the world.  
 (23) 1.435.922 AA  
 312115

July 10 1915



P. 22



Construction Camp #9. Dumbell camp Foreman

BIBLIOTECA (24) 1.435.923 AA  
 BRASIL  
 NACIONAL 03/02/15

Neg 10057

24

May 10089

25

P. 33

BIBLIOTECA (25) 1435.924

BRASIL NACIONAL 03/02/95

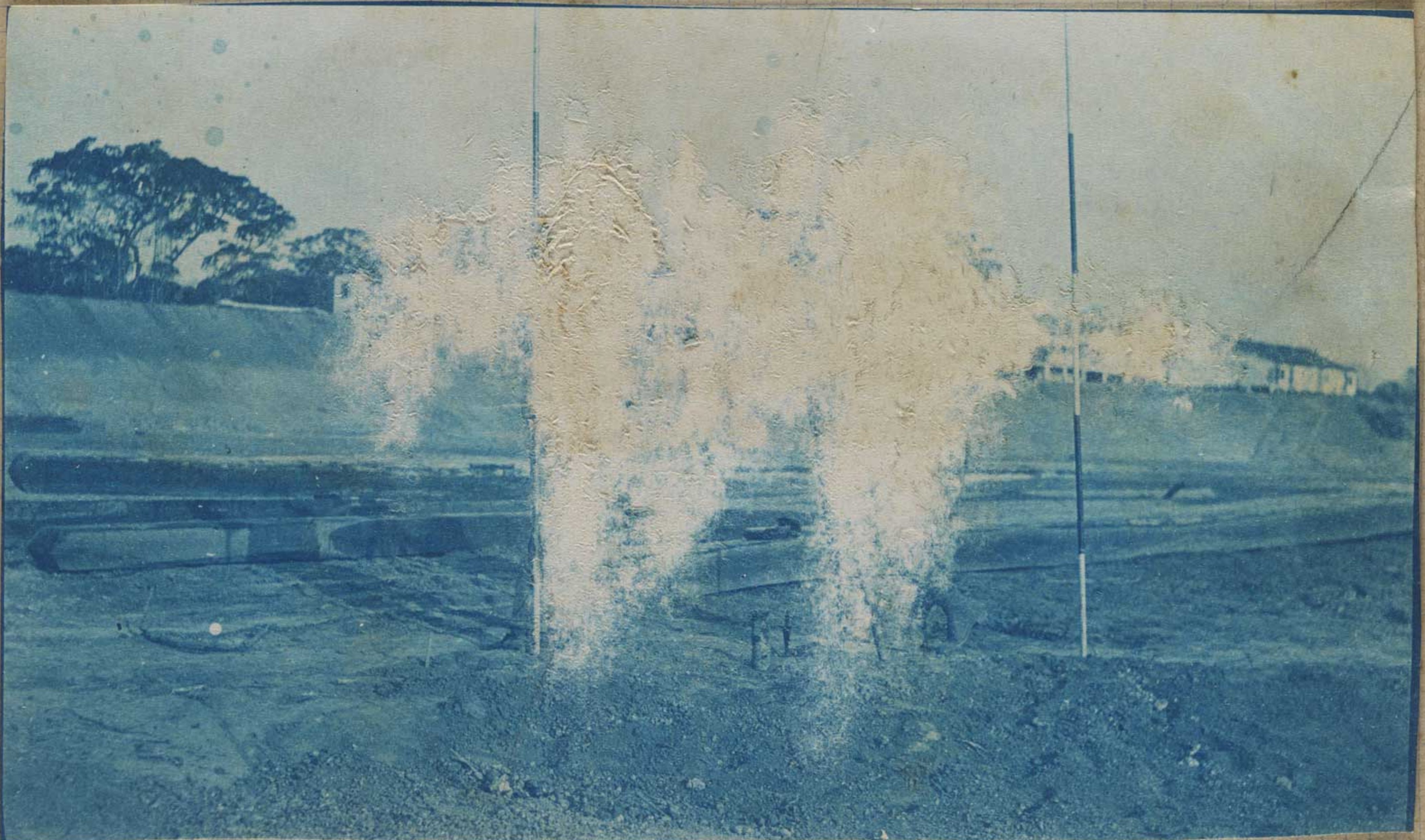


L.T. Gregerson Terminal Eng'r.

L.T. M<sup>EC</sup>.

26

Oct. 1908



BIBLIOTECA BRASIL NACIONAL

(26) 1435.925 DA

3/2/15 Staking out Round House

May 10090

P. 21



BIBLIOTECA (27) 1435.926  
 BRASIL  
 NACIONAL 03/02/15

NEG 10059

Trestle Bridge just south of Santo Antonio on M.M.Ry. Brazil, 1909.  
 W.K. Runyon 1<sup>st</sup>. Division Engineer of the M.M.Ry.

27

BIBLIOTECA (28) 1435.927 AA  
BRASIL  
NACIONAL  
03/02/15



Cut on Residency No. 1.

Ulg 10123

P. 35

28

29

p. 36



July 10052

BIBLIOTECA  
BRASIL  
NACIONAL (29) 1.435.928 AA  
03/02/15

30



July 10053

(30) 1.435.929 AA  
03/02/15

Neeg 10091

31



P.  
37

Porto Velho as it was in Nov. 1908.

(31)  $\frac{1.435.930}{03/02/15}$  AA

32



(32)  $\frac{1.435.931}{03/02/15}$  AA

Neeg 10092

P. 38



316

Engineers at work on Residency No. 4.

(33) 1435.932 AA  
03/02/15



Neg 10060

33

neg 10131



344

Through the jungles of Brazil.

(34)  $\frac{1.435.933}{03/02/95}$  AA

P. 39

34



35



1500194

(35) 1,435.934 AA  
03/02/15

36



May 10 1915

(36) 1,435.935 AA  
03/02/15

37

P. 41



Neq 10093

L.T. Gregerson (his first Sunday off).

(37)  $\frac{1.435.936}{03/02/75}$  AA

38

BIBLIOTECA  
BRASIL  
NACIONAL

(38)  $\frac{1.435.937}{03/02/75}$  AA



Neq 5053f

P. 42



322

*Dr. Brennan, and a sick hombre*

(39)  $\frac{1.435.938}{03/02/45}$  AA

Nky 10055

39



327

*Sinking Fill, sometimes sinks 1<sup>st</sup>00 in a day.*

May 30 1904

(40)  $\frac{1,435.939}{03102115}$  AA

1.43  
40

p.44



41

neg 20334

(41) 1.435.940 AA  
03/02/15



42

neg 20333

(42) 1.435.941 AA  
03/02/15

May 1930



(43)  $\frac{1,435.942}{03102115}$  AA

p. 45

43

Nov 10 1915

430  
p. 46

44



(44) 1.435.943 AA  
03/02/15

45



Nov 10 1915

(45) 1.435.944 AA  
03/02/15

May 10 1900



289

Some slides along the line

(46) 1.435.945 AA  
03102195

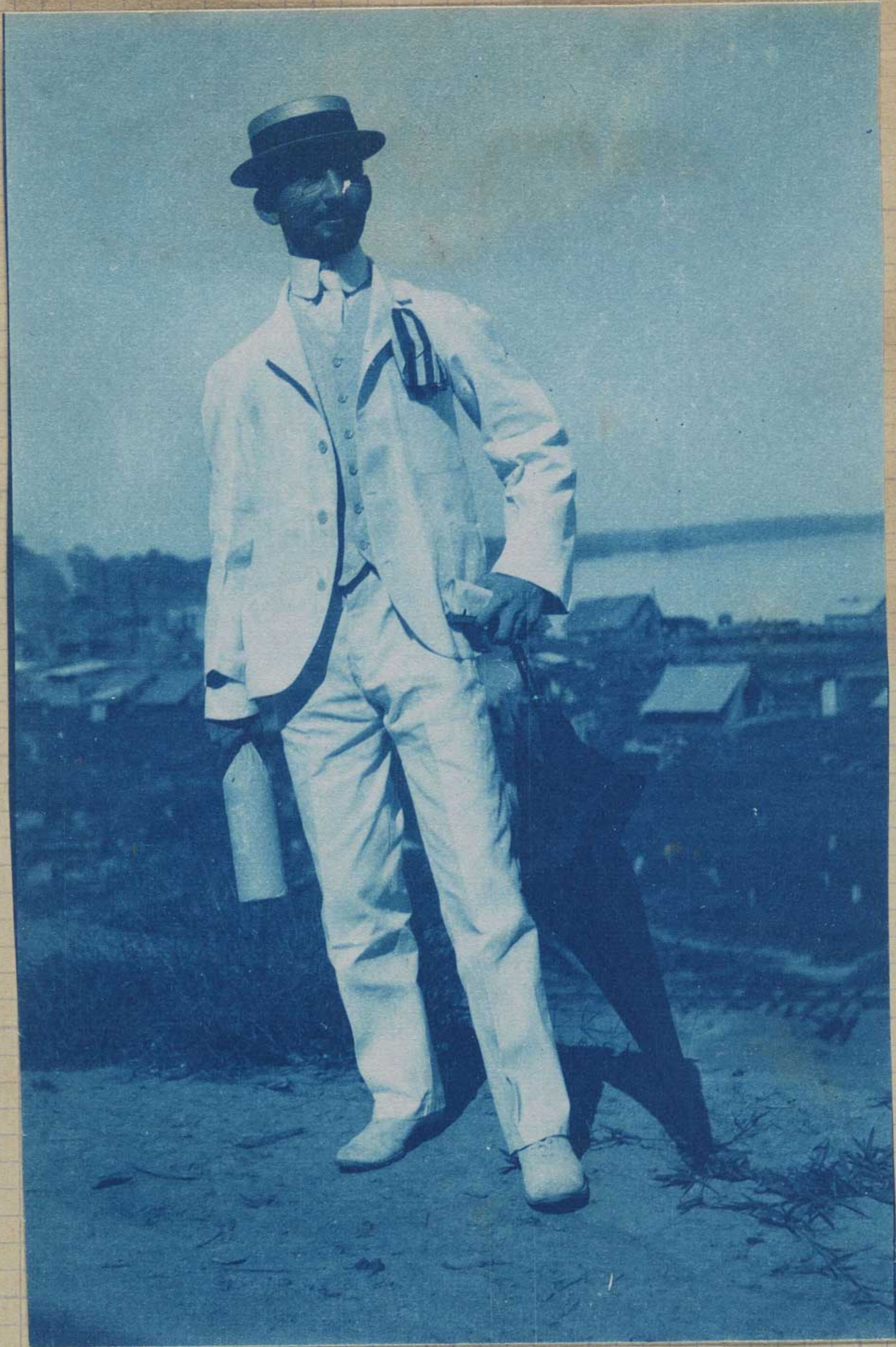
P. 47

46



P. 48

47



(47) 1,435.946 AA  
03/02/15

NEG 10309



257

Batellão

(48)  $\frac{1.435.947}{03/02/15}$  AA

p. 49

Nov 10 1908

478

050

49



(49) 1,435.948

03/02/15 AA

May 10/13

P. 54



(50) 1,435.949 AA  
03/02/15

Neg 50 526

51



(51) 1,435.950 AA  
03/02/75

AA

*A.W. Chester, in the days of long ago.*

P. 56



Photo on the Madeira River

(52)  $\frac{1,435.951}{03/02/15}$  AA

neg 10 of

52

1902 50129



246

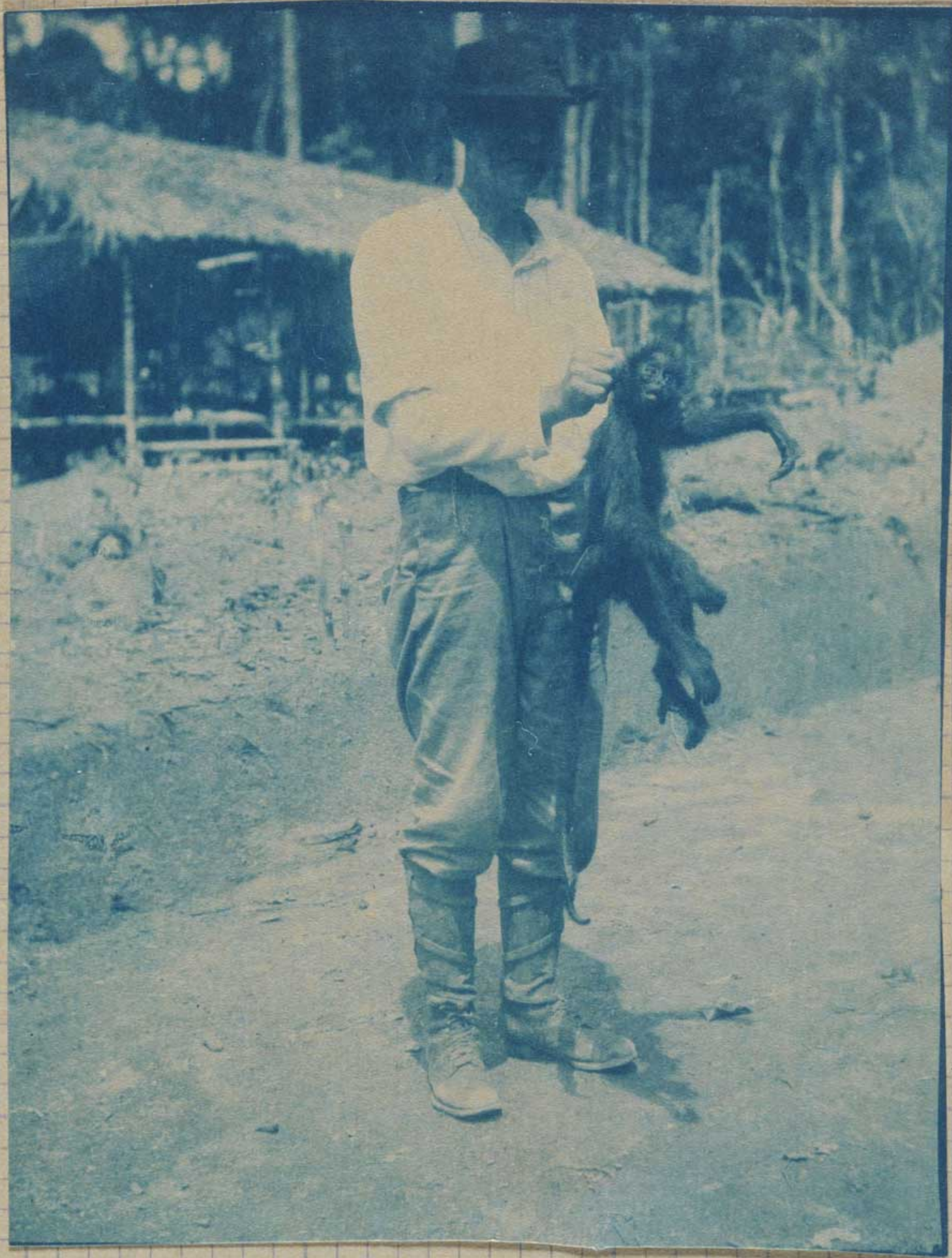
(53)  $\frac{1,435.952}{03/02/15}$  AA

p. 57

53

p. 58

54



*The Home of the Monkey.*

(54) 1,435.953 AA  
03/02/75

May 30 1947



P. 62



Neely 10056

(55)  $\frac{1,435.954}{03102115}$  AA

55

119 20228



302

(56)  $\frac{1,435.955}{03/02/75}$  AA

1.63

56

57

p.64



Neg 10127

(57)  $\frac{1.435.956}{03/02/15}$  AA

58

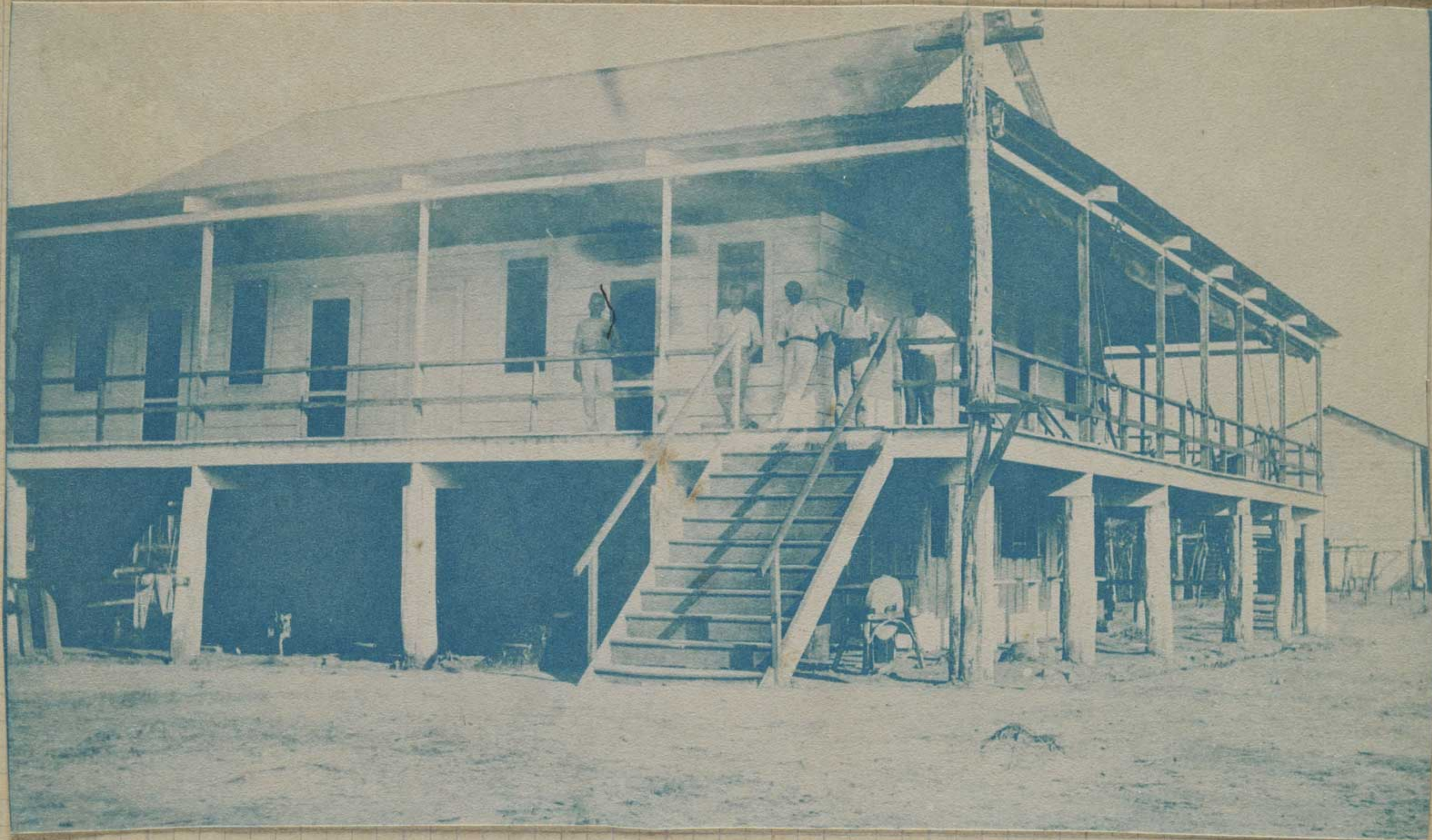


Neg 10132

(58)  $\frac{1.435.957}{03/02/15}$  AA

59

P.65



Neg 10303

(59)  $\frac{1.435.958}{03/02/15}$  AA

60



Neg 10302

(60)  $\frac{1.435.959}{03/02/15}$  AA

P. 66



STO

neg total

(61)  $\frac{1.435.960}{03102115}$  AA

61

May 10099



(62) 1435.961 AA  
03/02/15

P. 69

62

P. 70



63

(63) 1.435.962 AA  
03/02/15

Neg 10340



64

(64) 1.435.963 AA  
03/02/15

Neg 10339

65

P. 73



(65)  $\frac{1,435.964}{03102195}$  AA

Neg 10348

66



(66)  $\frac{1,435.965}{03102195}$  AA

Neg 10349



P. 74



Neg 10063

(67)  $\frac{1435.966}{0310215}$  AA

67



295

(68) 1.435.967 AA  
03/02/15

10062  
19001

68  
P. 75

69

p. 76



Navy 10206

(69) 1,435.968 AA  
03/03/15



(70)  $\frac{1.435.969}{03/02/15}$  AA

Aug 30 1935



(71)  $\frac{1.435.970}{03/02/15}$  AA

Aug 30 1934

P. 80



251

May 10 1905

(72) 1.435.971 AA  
03/02/15

72

May 10098



8.69

(73) 1.435.972 AA  
03102115

p. 81

73

P. 82

74

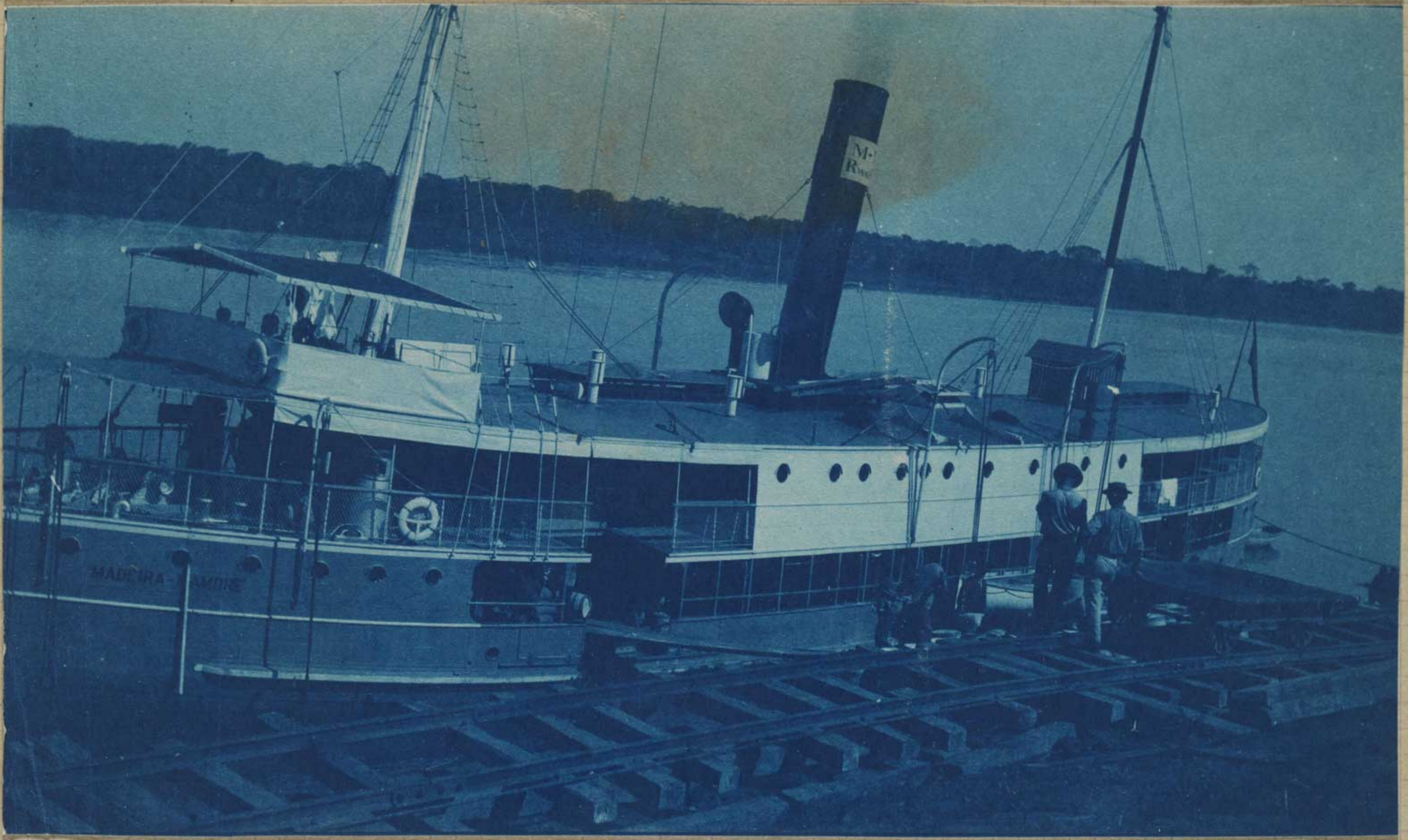


Neog 10304

(74) 1.435.973 AA  
03/02/95

75

P.85



Neg 10101

(75) 1.435.974 AA  
03/02/15

76



Neg 10102

(76) 1.435.975 AA  
03/02/15



P. 86

77



304

Dr. Emrick, W.K. Runyon

(77) 1435.976 AA  
03/02/95

May 30 1916

P. 87  
78



A jungle scene.

(78)  $\frac{1,435.977}{03102175}$  AA

Neg 10094

P. 88

79



July 10 1918

(79) 1.435.978 AA  
03/02/15



80

P. 97

Aug 10 1910  
ORTON

(80)  $\frac{1.435.979}{03/02/15}$  AA



81

Aug 10 1910  
ORTON

(81)  $\frac{1.435.980}{03/02/15}$  AA

P.92

82

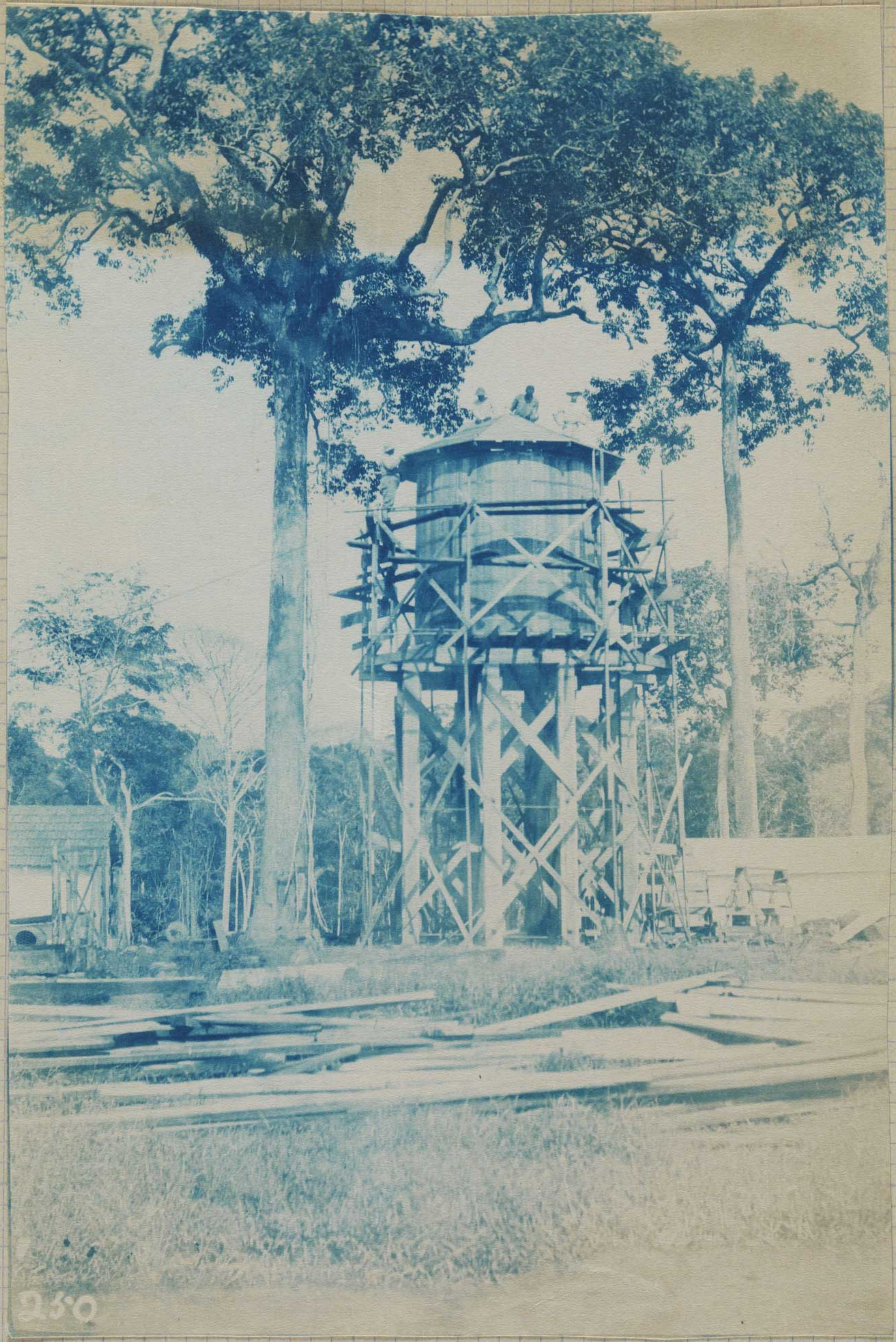


309

Work along the line

(82)  $\frac{1.435.981}{03/02/15}$  AA

May 20 1915



83  
p.93

230

Tank at Candelaria

(83)  $\frac{1,435.982}{03/02/15}$  AA

Neg 10096

84



(84)  $\frac{1.435.983}{03102195}$  AA

July 20 1946

85

P. 99



*The same kid*

(85) 1.435.984 AA  
03/02/95

Neg 10095



P. 100

86



May 10 1936

(86) 1,435.985 AA  
03/02/15



BIBLIOTECA  
BRASIL  
NACIONAL

(81)

1435,986

AA

03100175

"The Kiddo"

Neg 10094

P. 103

87

